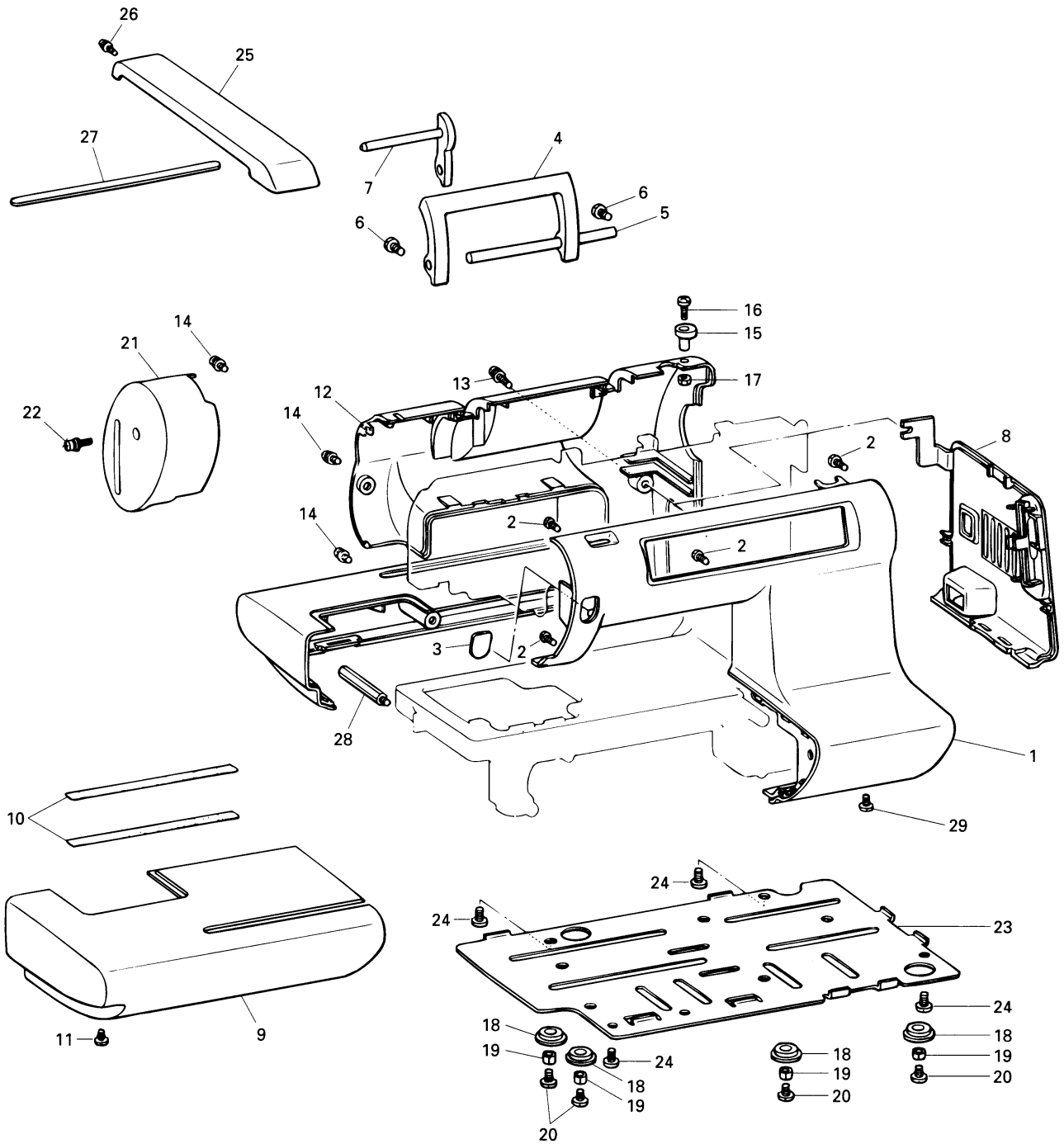


PARTS CATALOGUE FOR
COMPUTERIZED SEWING MACHINE
EMBROIDERY MACHINE

PE-150

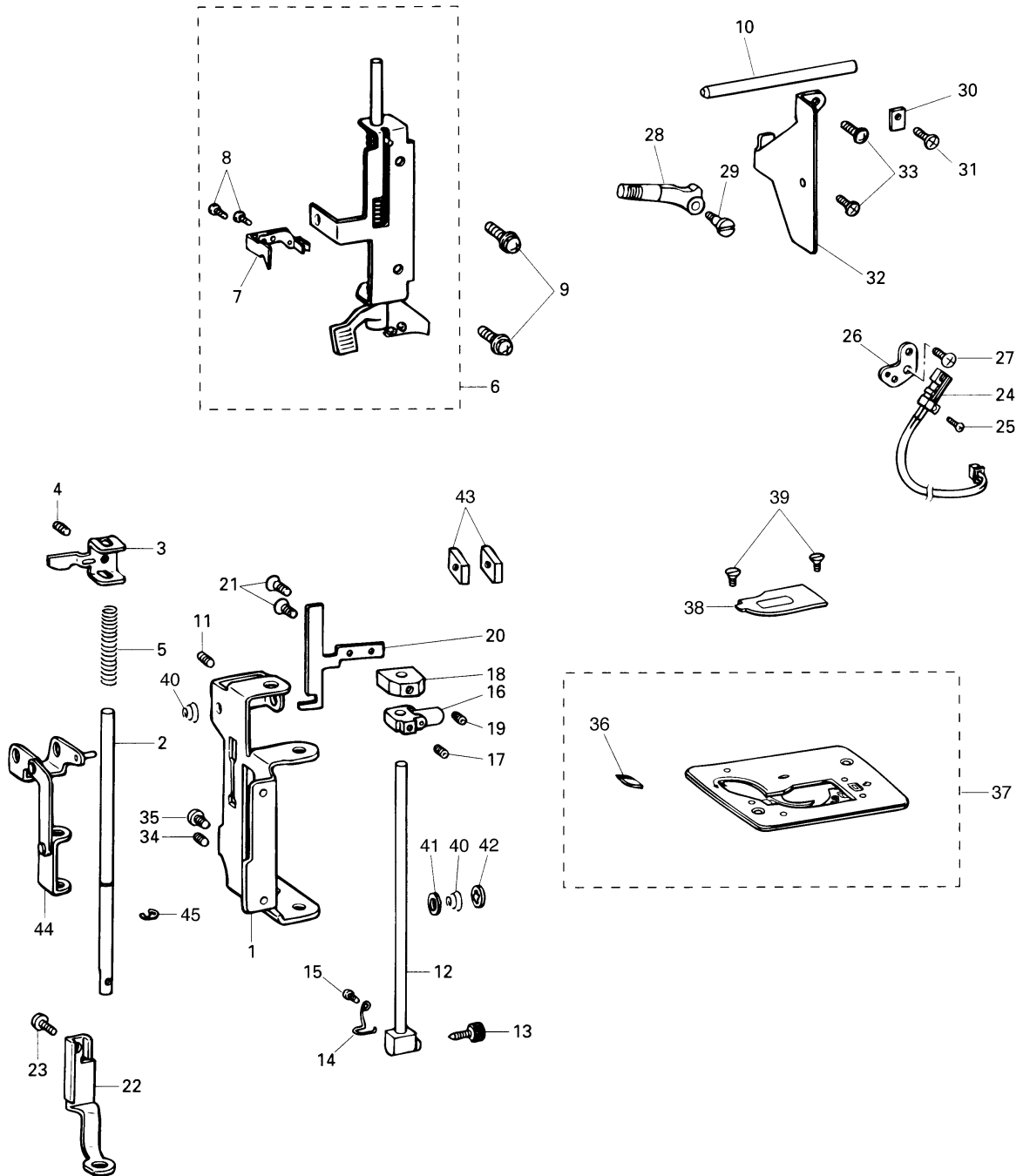
CONTENTS

| | |
|--|----|
| (1) PRINCIPAL PARTS AND DISPLAY | 2 |
| (2) NEEDLE BAR AND PRESSER BAR..... | 4 |
| (3) BALANCE, ROTARY HOOK AND UPPER SHAFT ... | 6 |
| (4) VERTICAL SHAFT, BOBBIN WINDER AND THREADING MECHANISM | 8 |
| (5) LAMP, ELECTRONIC PARTS, MOTOR AND POWER SUPPLY | 10 |
| (6) EMBROIDERY MECHANISM..... | 12 |
| (7) ACCESSORIES, PACKAGES | 14 |



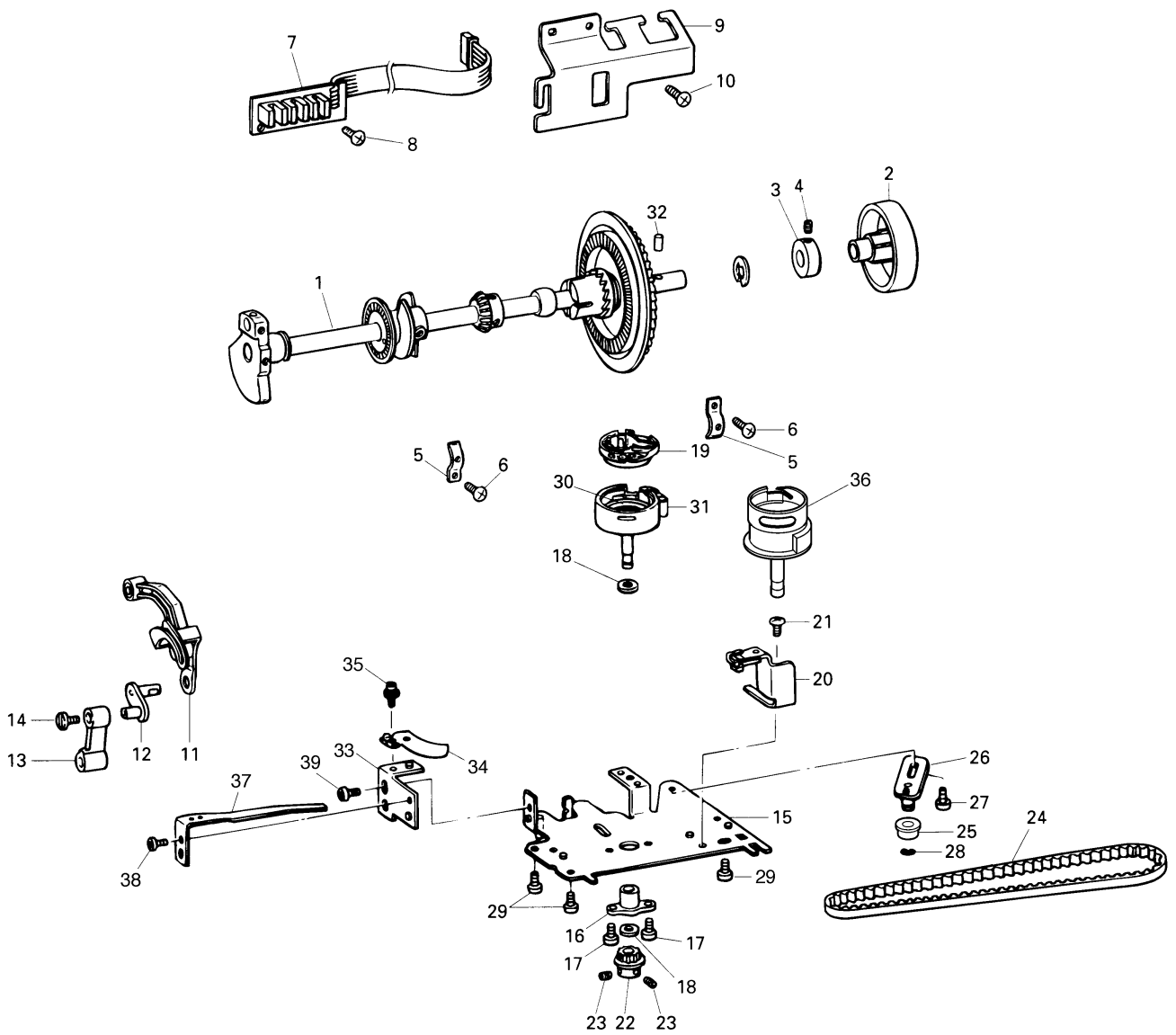
(2) NEEDLE BAR AND PRESSER BAR

| No. | CODE | NAME | REMARKS | No. | CODE | NAME | REMARKS |
|-----|-----------|---------------------------------|---------|-----|-----------|--------------|---------|
| 1 | XA0415001 | Presser unit holder | | 45 | 048040346 | Stop ring E4 | |
| 2 | XA3623051 | Presser bar | | | | | |
| 3 | XA3626051 | Presser bar bracket | | | | | |
| 4 | 014400632 | Screw 4 × 6 | | | | | |
| 5 | XA3624001 | Presser bar spring | | | | | |
| 6 | XA0419001 | Thread guide assembly | | | | | |
| 7 | XA0445101 | Hook assembly | | | | | |
| 8 | 037200416 | Screw 2 × 4 | | | | | |
| 9 | 052300606 | Screw 3 × 6 | | | | | |
| 10 | X58772151 | Thread take-up lever stud | | | | | |
| 11 | 014400632 | Screw 4 × 6 | | | | | |
| 12 | X55185001 | Needle bar assembly | | | | | |
| 13 | XA4052001 | Needle clamp screw | | | | | |
| 14 | X55187100 | Needle bar thread guide | | | | | |
| 15 | 062020416 | Screw 2 × 4 | | | | | |
| 16 | XA0425001 | Needle bar block assembly | | | | | |
| 17 | 014400432 | Screw 4 × 4 | | | | | |
| 18 | XA0429000 | Positioning supporter | | | | | |
| 19 | 012400432 | Screw 4 × 4 | | | | | |
| 20 | XA0430051 | Needle threader position setter | | | | | |
| 21 | 004260405 | Screw 26 × 4 | | | | | |
| 22 | XA3625001 | Embroidery presser | | | | | |
| 23 | 060400616 | Screw 4 × 6 | | | | | |
| 24 | X59478001 | Presser switch assembly | | | | | |
| 25 | 062260516 | Screw 2.6 × 5 | | | | | |
| 26 | X58676051 | Presser switch holder | | | | | |
| 27 | X57908051 | Screw 4 × 10 | | | | | |
| 28 | X58677051 | Presser foot lever | | | | | |
| 29 | X55168001 | Stud screw M4 | | | | | |
| 30 | X50532001 | Shaft presser plate | | | | | |
| 31 | X57908051 | Screw 4 × 10 | | | | | |
| 32 | XA0431051 | Face plate base plate | | | | | |
| 33 | X57908051 | Screw 4 × 10 | | | | | |
| 34 | 012400632 | Screw 4 × 6 | | | | | |
| 35 | 060301216 | Screw 3 × 12 | | | | | |
| 36 | X80321001 | Lower thread cutter | | | | | |
| 37 | XA3633001 | Needle plate assembly | | | | | |
| 38 | X56828151 | Needle plate cover | | | | | |
| 39 | X50487001 | Screw M4 | | | | | |
| 40 | X57822101 | Needle bar presser spring | | | | | |
| 41 | X58511100 | Washer | | | | | |
| 42 | 109763003 | Washer | | | | | |
| 43 | XA1298000 | Spacer | | | | | |
| 44 | XA3627051 | Presser link assembly | | | | | |



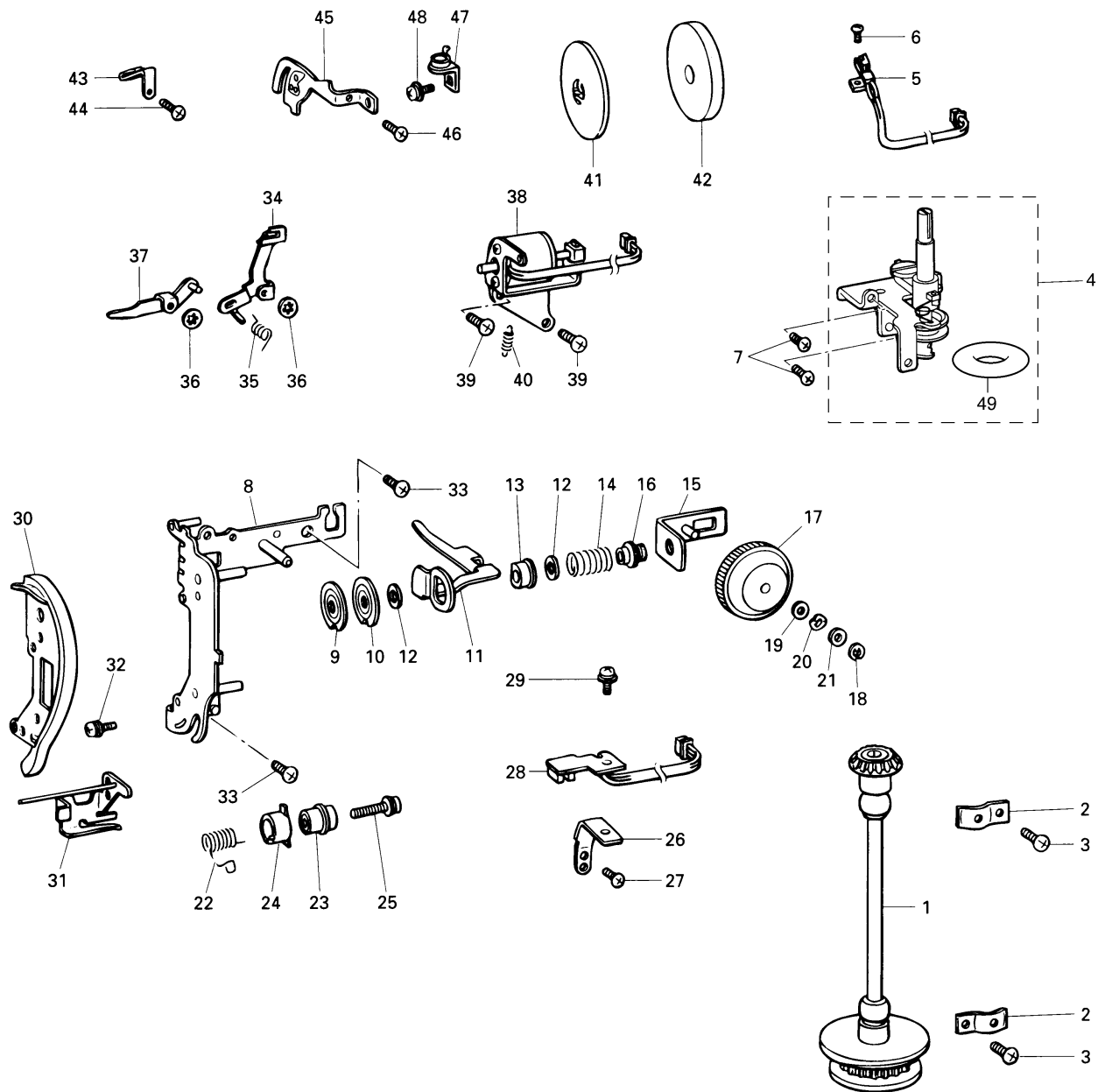
(3) BALANCE, ROTARY HOOK AND UPPER SHAFT

| No. | CODE | NAME | REMARKS |
|-----|-----------|--|---------|
| 1 | XA3719101 | Upper shaft assembly | |
| 2 | X55147001 | Hand wheel | |
| 3 | 130096151 | Collar | |
| 4 | 014400632 | Screw 4 × 6 | |
| 5 | 132421001 | Lower shaft bushing presser | |
| 6 | 060401216 | Screw 4 × 12 | |
| 7 | XA0450101 | NP PC board assembly | |
| 8 | 060400816 | Screw 4 × 8 | |
| 9 | X58763051 | Shutter cover | |
| 10 | X57908051 | Screw 4 × 10 | |
| 11 | X58776151 | Thread take-up assembly | |
| 12 | X59571051 | Needle bar crank | |
| 13 | X55197050 | Needle bar crank rod | |
| 14 | X59572051 | Screw 3.57 | |
| 15 | XA6697001 | Rotary hook shaft frame assembly | |
| 16 | XA3644000 | Shaft supporter for Europe | |
| | XA6698000 | Shaft supporter for U.S.A., CANADA | |
| 17 | 060300616 | Screw 3 × 6 | |
| 18 | 137805001 | Spacer | |
| 19 | XA5651101 | Inner rotary hook assembly | CHG |
| 20 | X59803001 | Inner rotary hook bracket assembly | |
| 21 | 060400616 | Screw M4 × 6 | |
| 22 | 138417000 | Rotary hook shaft pulley | |
| 23 | 014400632 | Screw 4 × 6 | |
| 24 | X58784001 | Timing belt 200 XL015 | |
| 25 | X50079000 | Belt tension pulley | |
| 26 | XA3645051 | Pulley plate assembly | |
| 27 | 052300606 | Screw 3 × 6 | |
| 28 | 048060346 | Stop ring E6 | |
| 29 | X57908051 | Screw 4 × 10 | |
| 30 | X59310001 | Outer rotary hook washer for Europe | |
| 31 | XA0479001 | Outer rotary hook assembly for Europe | |
| 32 | X51920001 | Needle roller bearing | |
| 33 | XA3660050 | Fixed blade holder | |
| 34 | XA3661100 | Inner rotary hook holder | |
| 35 | 052300606 | Screw 3 × 6 | |
| 36 | XA6699001 | Outer rotary hook assembly for U.S.A., CANADA | |
| 37 | XA3664001 | Lower thread guide plate assembly | |
| 38 | 060300616 | Screw 3 × 6 | |
| 39 | 060400616 | Screw 4 × 6 | |
| | | | |



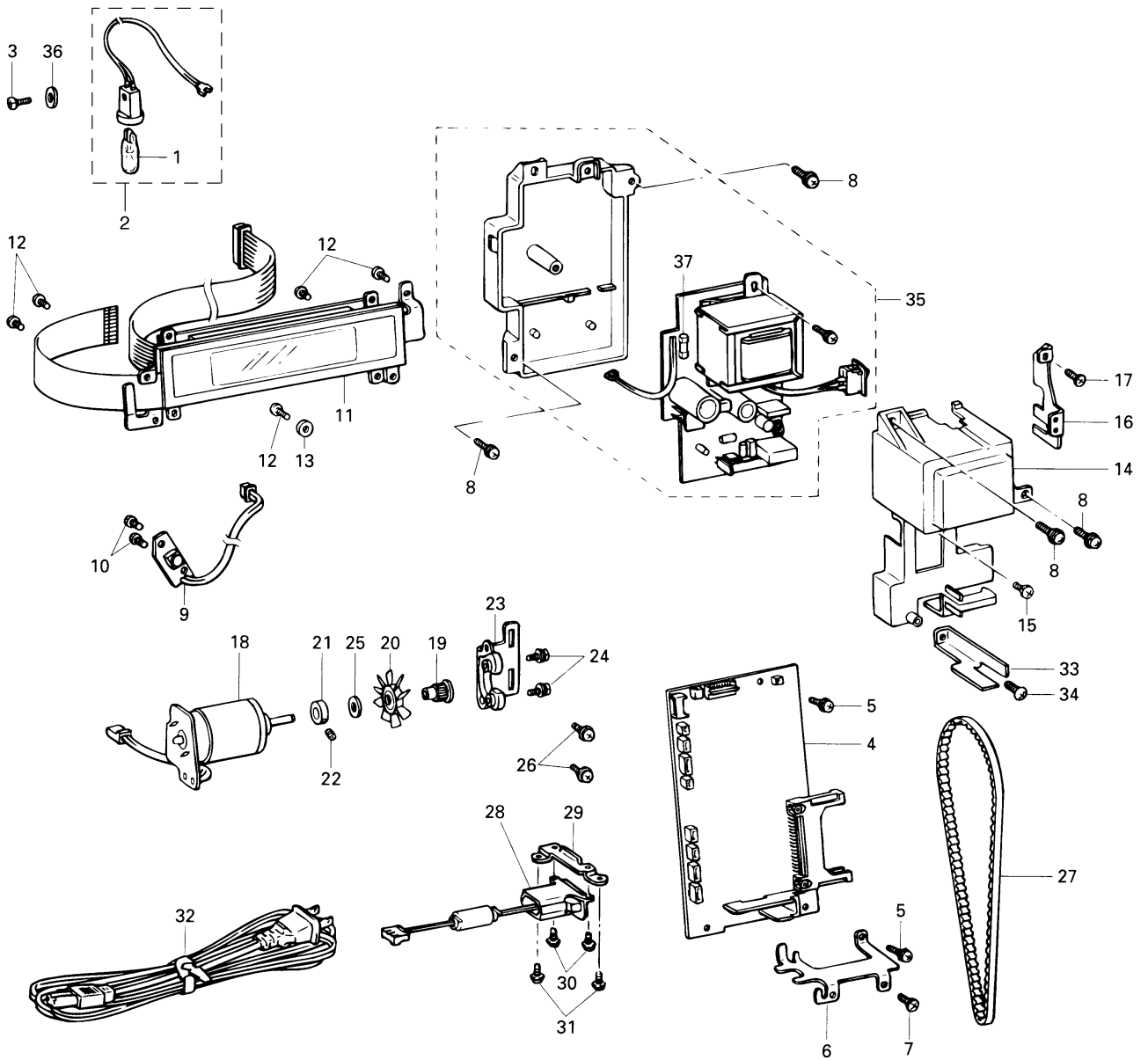
(4) VERTICAL SHAFT, BOBBIN WINDER AND THREADING MECHANISM

| No. | CODE | NAME | REMARKS | No. | CODE | NAME | REMARKS |
|-----|-----------|---|---------|-----|-----------|-------------------------------|---------|
| 1 | X58785001 | Vertical shaft assembly | | 45 | X58706101 | Thread guide plate B assembly | |
| 2 | 132421001 | Lower shaft bushing presser | | 46 | 085300815 | Screw 3 × 8 | |
| 3 | 060401216 | Screw 4 × 12 | | 47 | X53252051 | Spool guide assembly | |
| 4 | X58787051 | Bobbin winder assembly | | 48 | 052300606 | Screw 3 × 6 | |
| 5 | X56202001 | Bobbin winder switch assembly | | 49 | 120448051 | Rubber band | |
| 6 | 062260516 | Screw 2.6 × 5 | | | | | |
| 7 | X57908051 | Screw 4 × 10 | | | | | |
| 8 | X58681151 | Thread guide plate sub assembly | | | | | |
| 9 | 108263001 | Thread tension disc | | | | | |
| 10 | 129376001 | Thread tension disc | | | | | |
| 11 | X58686051 | Thread tension release plate A | | | | | |
| 12 | 109763003 | Washer | | | | | |
| 13 | 137881001 | Spring seat | | | | | |
| 14 | X58687101 | Spring | | | | | |
| 15 | X58688051 | Thread tension plate assembly | | | | | |
| 16 | 137878051 | Thread tension adjusting screw | | | | | |
| 17 | X55253003 | Thread tension dial | | | | | |
| 18 | 048030346 | Stop ring E3 | | | | | |
| 19 | 137999000 | Washer | | | | | |
| 20 | 137991001 | Washer | | | | | |
| 21 | 025040133 | Washer 4 | | | | | |
| 22 | X59432051 | Thread take-up spring | | | | | |
| 23 | X53828001 | Thread take-up spring case | | | | | |
| 24 | X58316001 | Thread breakage shutter | | | | | |
| 25 | 0A4402005 | Screw 4 × 20 DA | | | | | |
| 26 | X58691051 | Thread breakage sensor holder | | | | | |
| 27 | 060300616 | Screw 3 × 6 | | | | | |
| 28 | XA0453001 | Thread breakage board assembly | | | | | |
| 29 | 052300606 | Screw 3 × 6 | | | | | |
| 30 | X58694001 | Thread guide cover | | | | | |
| 31 | X58804051 | Arm thread guide assembly | | | | | |
| 32 | 538773001 | Screw 3 × 8 DA | | | | | |
| 33 | X57908051 | Screw 4 × 10 | | | | | |
| 34 | X58696151 | Thread tension release plate B | | | | | |
| 35 | X58697151 | Spring B | | | | | |
| 36 | 120454001 | Stop ring CS | | | | | |
| 37 | X58698051 | Thread tension release plate C assembly | | | | | |
| 38 | X58701001 | Solenoid holder assembly | | | | | |
| 39 | X57908051 | Screw 4 × 10 | | | | | |
| 40 | X58704051 | Spring | | | | | |
| 41 | X55260002 | Spool presser C | | | | | |
| 42 | X57045001 | Felt | | | | | |
| 43 | X59416001 | Thread guide plate A | | | | | |
| 44 | U22725001 | Screw 2.6 × 8 | | | | | |



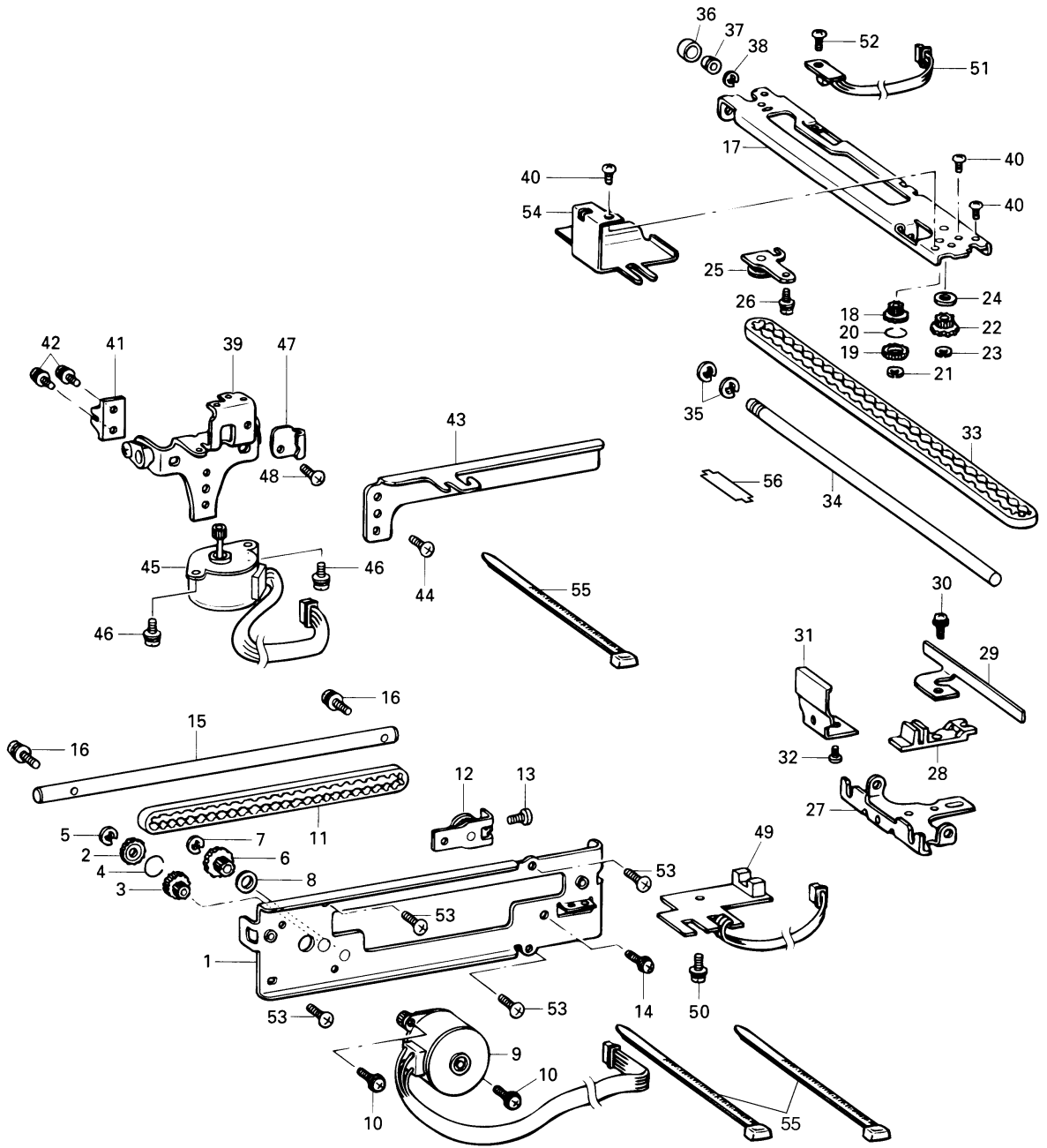
(5) LAMP ELECTRONIC PARTS, MOTOR AND POWER SUPPLY

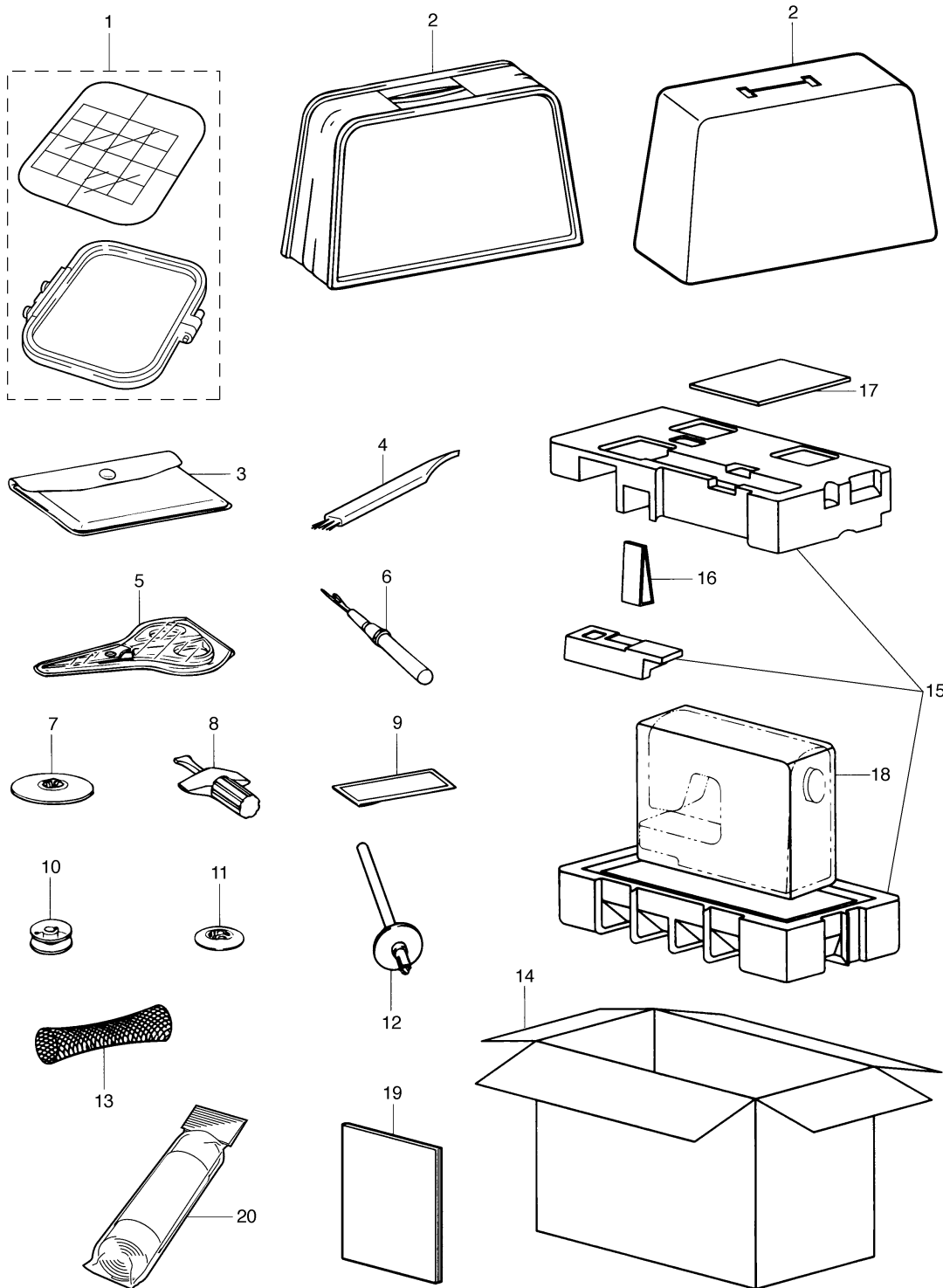
| No. | CODE | NAME | REMARKS | No. | CODE | NAME | REMARKS |
|-----------|-----------|---|---------|-----|--------------------------|---|---------|
| 1 | X50228001 | Sew-light bulb | | 29 | X59577001 | Inlet installing plate | |
| 2 | X58709001 | Sew-light bulb assembly | | 30 | 0A4300805 | Screw 3 8 | |
| 3 | 085301415 | Screw 3 14 | | 31 | 060400816 | Screw 4 8 | |
| 4 | X81156001 | Main PC board assembly for U.S.A., CANADA | | 32 | XA2815051 | Power supply cord for U.S.A. and Canada | |
| | X81157001 | Main PC board assembly for IRELAND, GERMANY, BELGIUM, U.K., FARNCE, NORWAY, NETHERLANDS, AUSTRIA, GREECE, SWEDEN, SPAIN, PORTUGAL, ITALY, FINLAND, SWITZERLAND, DENMARK, GIBRALTAR, ICELAND, MALTA, MONACO, AUSTRALIA, NEW ZEALAND and SOUTH AFRICA | | | XA0070051 | Power supply core for Europe (except UK) and South Africa | |
| | X81158001 | Main PC board assembly for other countries | | | X59328051 | Power supply cord for Australia and New Zealand | |
| X57079001 | | | | | Power supply cord for UK | | |
| 5 | 052300606 | Screw 3 6 | | 33 | XA0442001 | Main motor cover for 220V to 240V | |
| 6 | X58744051 | Board installing plate | | 34 | 138173001 | Screw 4 10 | |
| 7 | X57908051 | Screw 4 10 | | 35 | X81047201 | Power supply unit assembly for 120V | CHG |
| 8 | 052401205 | Screw 4 12 | | | X81048101 | Power supply unit assembly for 220V to 240V | CHG |
| 9 | X58746101 | SS PC board assembly | | 36 | 025030336 | Washer | |
| 10 | 087310815 | Screw 3 8 | | 37 | X55397001 | G Fuse 3.15A for 120V | |
| 11 | X58749012 | LCD module assembly | | | X53477001 | G Fuse 3.15A for 220V to 240V | |
| 12 | 085300815 | Screw 3 8 | | | | | |
| 13 | X57005000 | Insulating washer 3 | | | | | |
| 14 | XA0443001 | Power supply unit cover | | | | | |
| 15 | 138444001 | Screw 4 14 | | | | | |
| 16 | X59205001 | Switch holder | | | | | |
| 17 | X57908051 | Screw 4 10 | | | | | |
| 18 | XA0462001 | Motor unit for 120V | | | | | |
| | XA0468001 | Motor unit for 220V to 240V | | | | | |
| 19 | X58759000 | Motor pulley | | | | | |
| 20 | X58760000 | Flange fan | | | | | |
| 21 | 130676151 | Collar | | | | | |
| 22 | 014400632 | Screw 4 6 | | | | | |
| 23 | X58761051 | Motor holder | | | | | |
| 24 | X50020001 | Screw 3 10 DA | | | | | |
| 25 | X53838001 | Washer | | | | | |
| 26 | 138172001 | Screw 4 10 DA | | | | | |
| 27 | X58762001 | Driver belt B124 XXL4.8 | | | | | |
| 28 | XA4068001 | Inlet assembly for 120V | | | | | |
| | X59545001 | Inlet assembly for 220V to 240V | | | | | |



(6) EMBROIDERY MECHANISM

| No. | CODE | NAME | REMARKS | No. | CODE | NAME | REMARKS |
|-----|-----------|---------------------------------|---------|-----|-----------|-------------------------|---------|
| 1 | X58713151 | Main frame assembly | | 45 | XA3701001 | Y pulse motor | |
| 2 | X56321000 | Intermediate gear A | | 46 | 575039003 | Screw 3 × 5 | |
| 3 | X56322000 | Intermediate gear B | | 47 | X58731050 | Cord guide | |
| 4 | X56323051 | Gear spring | | 48 | 060300516 | Screw 3 × 5 | |
| 5 | 048020346 | Stop ring E2 | | 49 | XA0470001 | X sensor board assembly | |
| 6 | X56352000 | Y drive gear pulley | | 50 | 052300606 | Screw 3 × 6 | |
| 7 | 048040346 | Stop ring E4 | | 51 | X58259101 | Y sensor board assembly | |
| 8 | 026060235 | Washer 6 | | 52 | 060020416 | Screw M2 × 4 | |
| 9 | XA3694001 | X pulse motor | | 53 | X57908051 | Screw 4 × 10 | |
| 10 | 052300606 | Screw 3 × 6 | | 54 | XA3700050 | Gear Cover | |
| 11 | X58715001 | X belt 40S2M400 | | 55 | 124240001 | Bind | |
| 12 | X58716001 | X tension pulley plate assembly | | 56 | XA4480001 | Y presser plate | |
| 13 | 060300816 | Screw M3 × 8 | | | | | |
| 14 | 052300606 | Screw M3 × 6 | | | | | |
| 15 | X58718151 | X guide shaft | | | | | |
| 16 | 052401406 | Screw 4 × 14 | | | | | |
| 17 | X58719101 | X carriage assembly | | | | | |
| 18 | X56321000 | Intermediate gear A | | | | | |
| 19 | X56322000 | Intermediate gear B | | | | | |
| 20 | X56323051 | Gear spring | | | | | |
| 21 | 048020346 | Stop ring E2 | | | | | |
| 22 | X56352000 | Y drive gear pulley | | | | | |
| 23 | 048040346 | Stop ring E4 | | | | | |
| 24 | 026060235 | Washer 6 | | | | | |
| 25 | XA3695001 | Y tension pulley plate assembly | | | | | |
| 26 | 052300606 | Screw 3 × 6 | | | | | |
| 27 | XA3697001 | Y carriage | | | | | |
| 28 | X58272100 | Y slider | | | | | |
| 29 | X58724001 | Y shutter | | | | | |
| 30 | 052300606 | Screw 3 × 6 | | | | | |
| 31 | X58725001 | Notched spring | | | | | |
| 32 | 060300416 | Screw 3 × 4 | | | | | |
| 33 | X56354001 | Y belt 40S2M360 | | | | | |
| 34 | XA3698051 | Y guide shaft | | | | | |
| 35 | 048040346 | Stop ring E4 | | | | | |
| 36 | X51657000 | Roller rubber | | | | | |
| 37 | X51658000 | Roller wheel | | | | | |
| 38 | 048025346 | Stop ring E2.5 | | | | | |
| 39 | XA3699001 | X carriage support assembly | | | | | |
| 40 | 060300516 | Screw 3 × 5 | | | | | |
| 41 | X58729000 | X belt presser | | | | | |
| 42 | 538773001 | Screw 3 × 8 DA | | | | | |
| 43 | X58730151 | X initial shutter | | | | | |
| 44 | 060300516 | Screw 3 × 5 | | | | | |





PE-150
H8110141